

MRP: ₹ 22,450.00 (Incl. of all taxes)



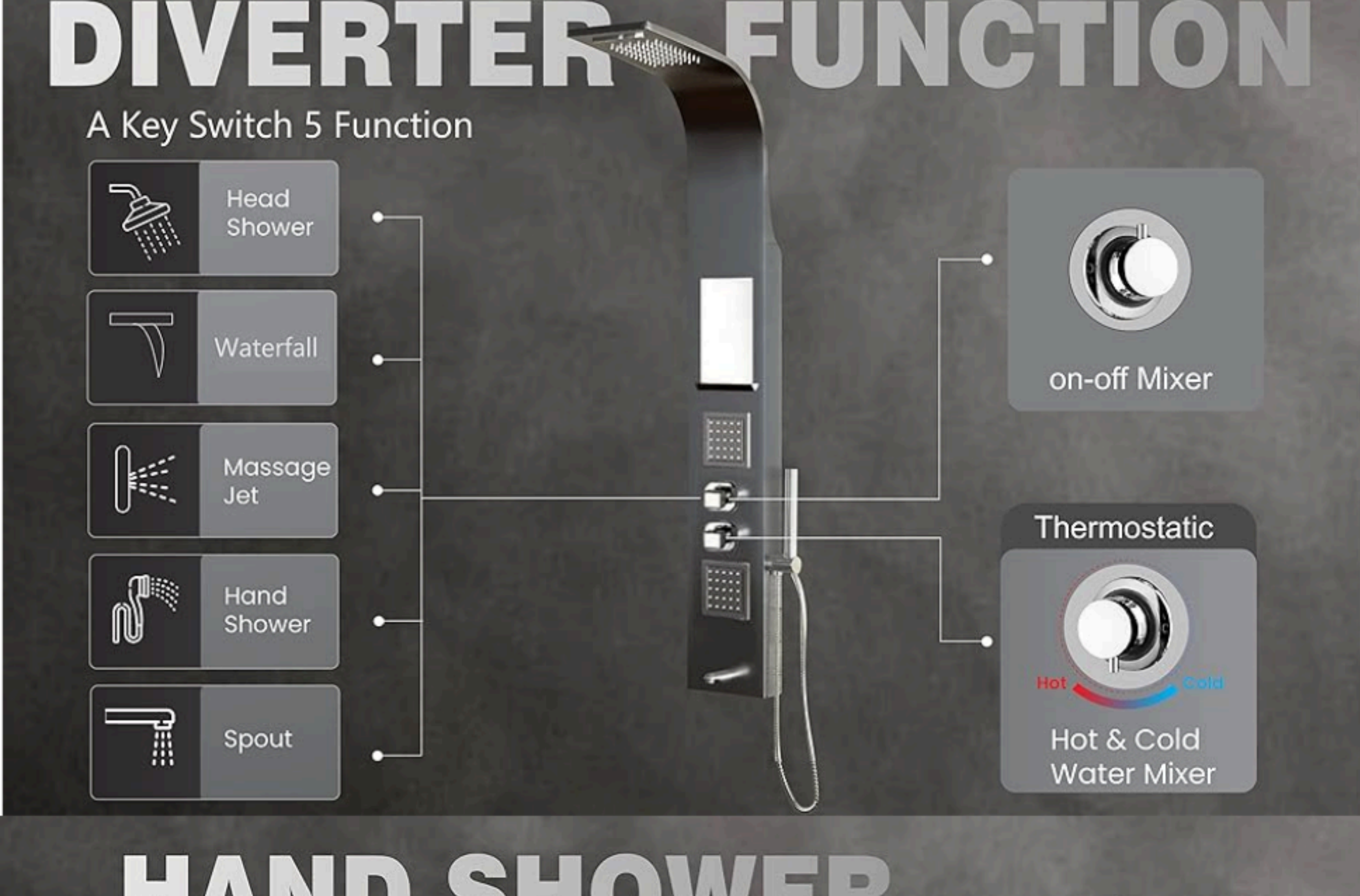
# Aquila SHOWER PANEL



Rainfall Spray

The Power Of Moveable Square Body Jets

## MASSAGE JETS

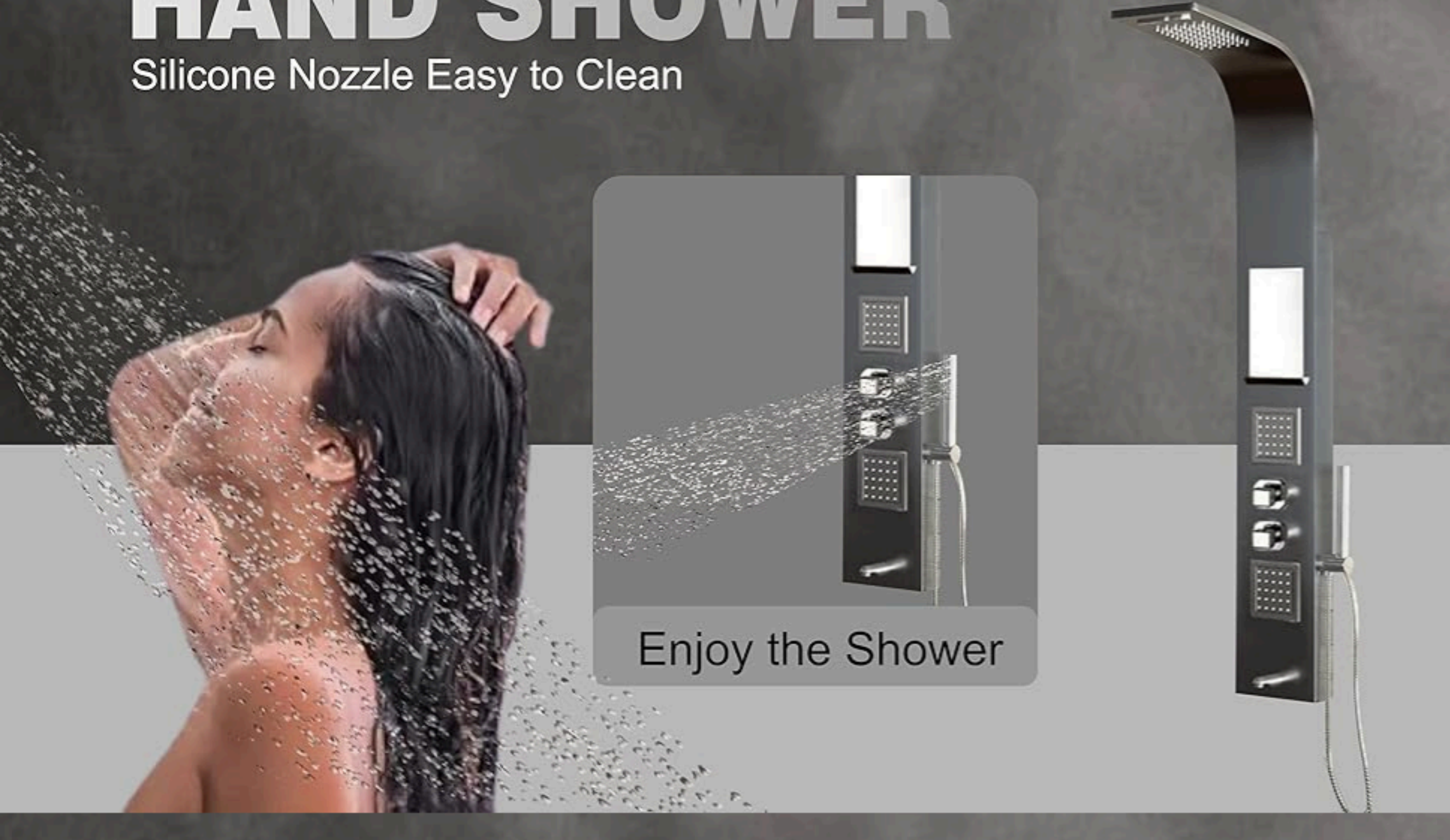


# DIVERTER FUNCTION

A Key Switch 5 Function

- Head Shower
- Waterfall
- Massage Jet
- Hand Shower
- Spout

- on-off Mixer
- Thermostatic  
Hot & Cold Water Mixer



# HAND SHOWER

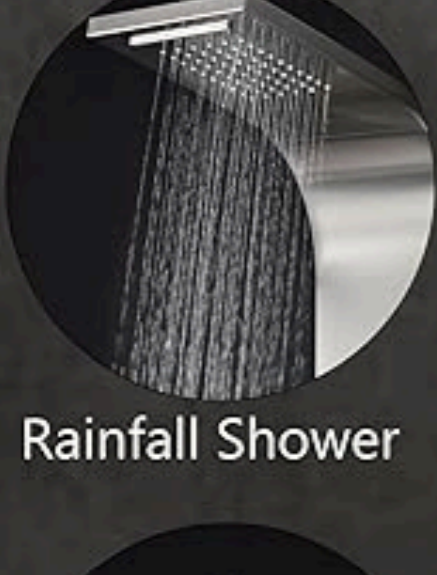
Silicone Nozzle Easy to Clean

Enjoy the Shower

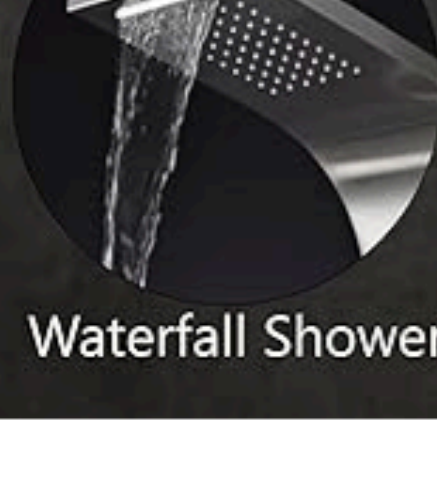


# RAINFALL DELIGHT

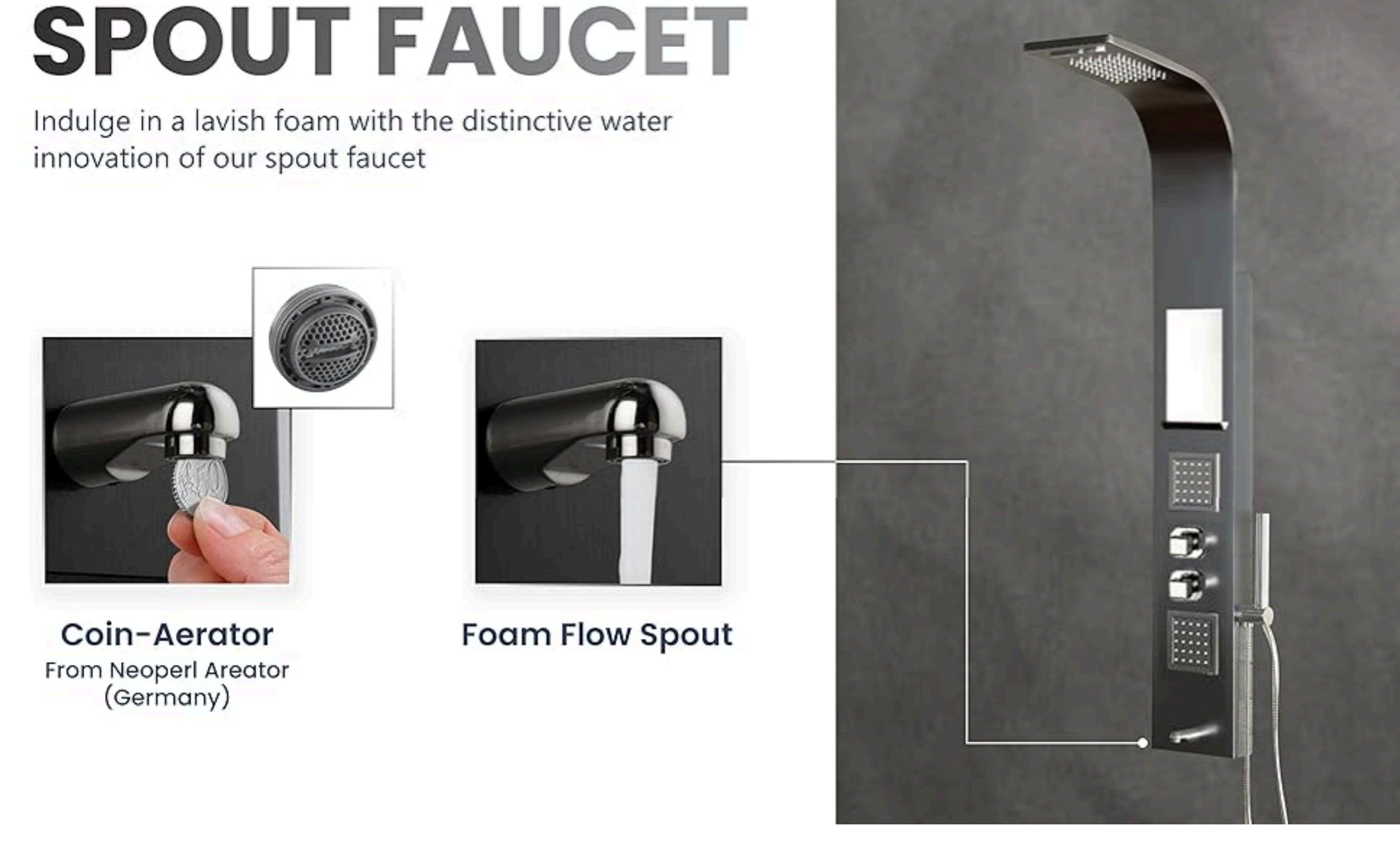
Immerse yourself in pure bliss every day with Jaaz's Aquila Shower's Rainfall Mode



Rainfall Shower

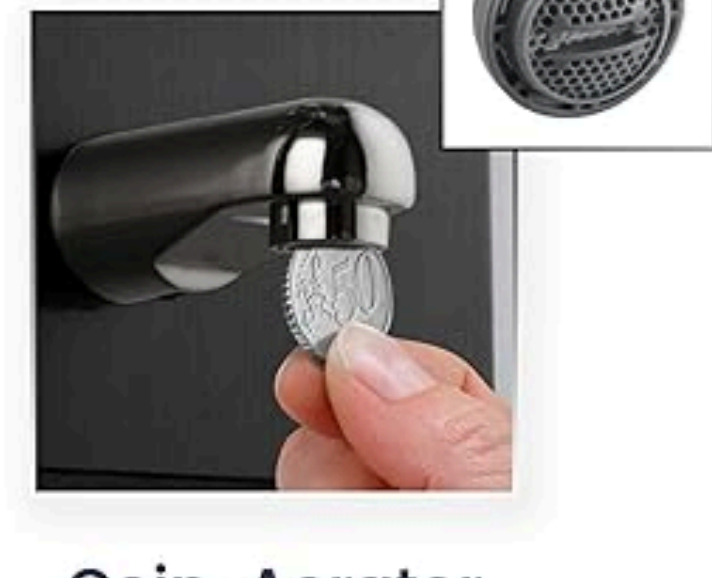


Waterfall Shower

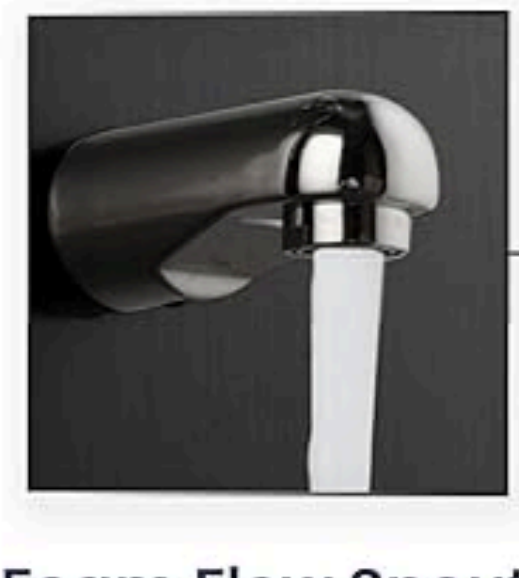


# SPOUT FAUCET

Indulge in a lavish foam with the distinctive water innovation of our spout faucet



Coin-Aerator  
From Neoperl (Germany)



Foam Flow Spout

## AQUILA SHOWER PANEL

The Aquila Shower Panel is a sophisticated addition to any bathroom, offering a range of features designed for an enhanced and luxurious shower experience.

### TECHNICAL DETAILS

- Maintenance Free Coin Aerator for Spout of Neoperl (Germany). We use Vernet (France) for Thermostatic Mixer Cartridge & Sedal (Spain) for Diverter Cartridge.
- Five Shower Function : 1. Rain Shower (60 Nozzle) 2. Waterfall Shower 3. Hand Shower (48 Nozzle) 4. Two Massage Jets (50 Nozzle) with Tilted on all side 4. Foam Flow Spout.
- 1st Manufacturer of Shower Panel in India Since 2009 | Warranty: 3 Years
- Served at 750 + Location of India | 15000 + Happy Customer
- 0.5 HP pressure pump is required for best performance

### CARE & CLEANING TIPS

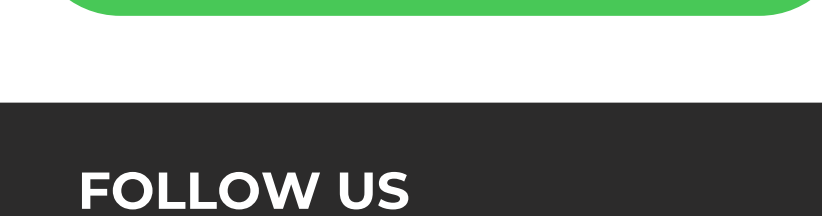
- Cleaning: Use only water for cleaning the surface; avoid using any chemical cleaners.
- Water Caution: Avoid exposure to High TDS (Total Dissolve Solids) water. The TDS Level Recommended by WHO, however it should be less than 300 ppm (parts per million)

### POLICY

- Installation Guide [Know More](#)
- Customer Support [Know More](#)
- Return Policy [Know More](#)
- Warranty [Know More](#)

## HOW TO INSTALL AQUILA

We recommend consulting professional help if you are unfamiliar with installing bathroom fixtures and/or plumbing. For these instructions, it is assumed that the water supply lines are in place behind the finished wall and are directly accessible for shower panel installation



### FOLLOW US

To stay updated with all that's happening in Jaaz, connect with us

